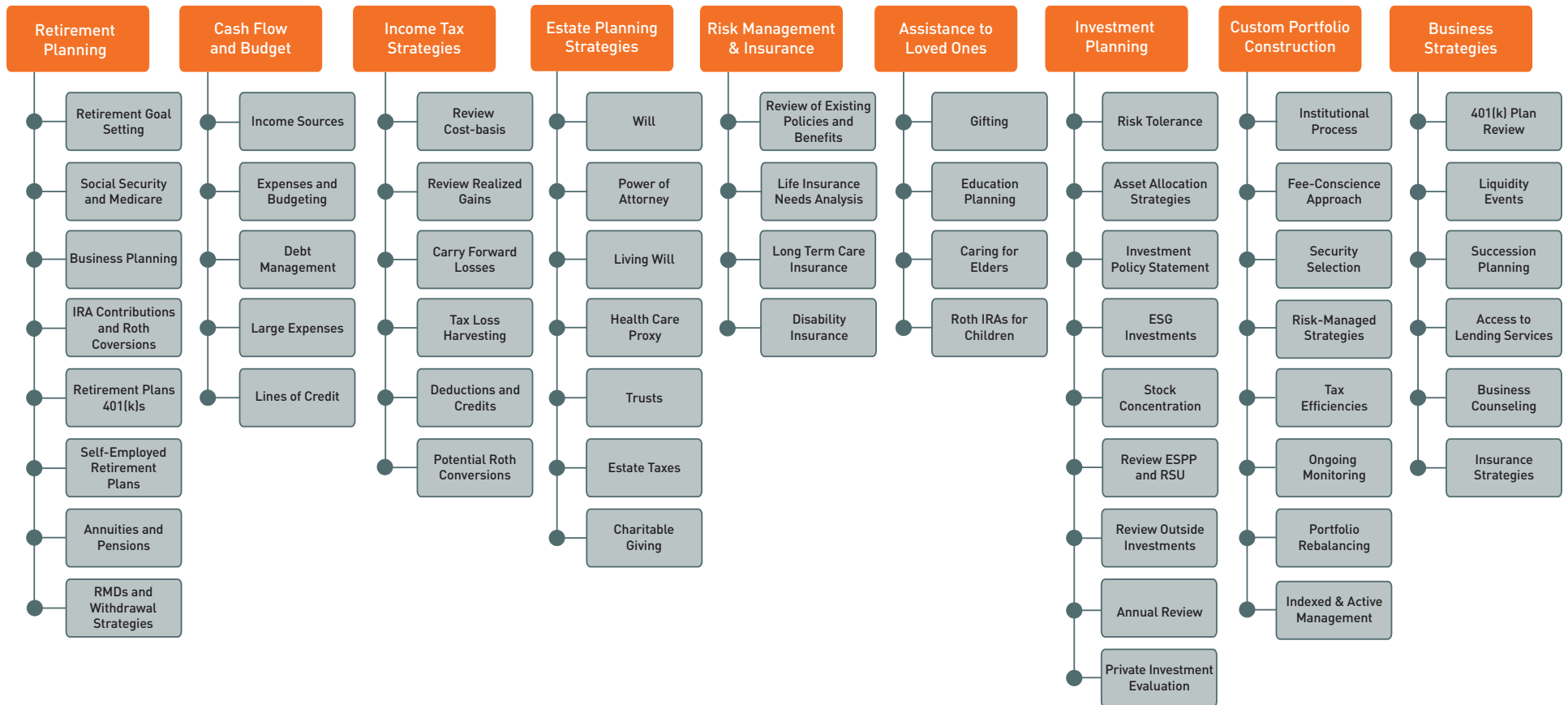


## CUSTOMIZED INVESTMENT MANAGEMENT

Customized investment portfolios are managed to help achieve your unique objectives, time frame and risk profile. We employ cost-effective, tax-efficient, risk-managed strategies. This disciplined focus and active asset allocation allows us to make adjustments when needed in an effort to help avoid any unnecessary impact on the financial health of your **Total Wealth Plan**.

### TOTAL WEALTH PLANNING SERVICES



[sandboxfp.com](https://sandboxfp.com)